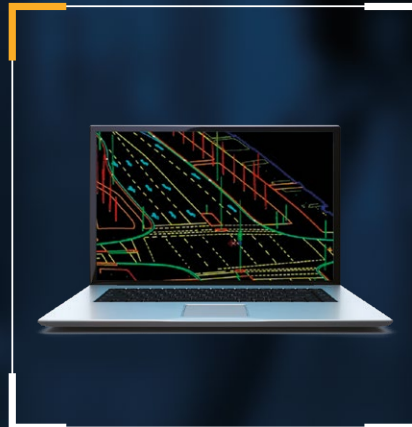
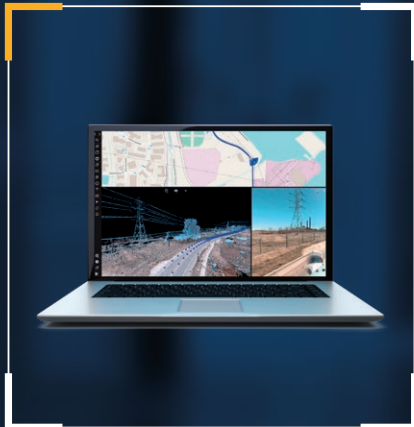


# Trimble

## MOBILE MAPPING SOLUTIONS



### Take control of the way you work



Whatever your project or budget, Trimble's complete portfolio of mobile mapping solutions gives you a choice to meet your needs. At Trimble we focus on the complete system and workflow, with complementary software products that are common across the portfolio.

Whether your interest is in capturing immersive imagery to create a mapping-based street view application or you are looking to undertake precise survey and engineering projects, Trimble has a mobile mapping solution waiting to be discovered.

Find out more at:  
[geospatial.trimble.com](https://geospatial.trimble.com)

Trimble MX7	Trimble MX50	Trimble MX90
		
<p><b>Mobile imaging for asset management</b></p>	<p><b>Mobile scanning and imaging for asset management</b></p>	<p><b>For large-scale scanning and mapping missions</b></p>
<p>The Trimble® MX7 mobile mapping system makes it easier for your team to manage assets. Collect 360-degree images in the field, then extract and analyse image data in the office. Welcome to the world of mobile imaging.</p> <p>The system combines a 360° spherical camera with an integrated Trimble GNSS/inertial positioning system giving you the capability to position objects photogrammetrically from an accurate vehicle trajectory. Utilise the Trimble MX7 to capture 360-degree, geo-referenced images at highway speeds to vastly reduce project operating costs whilst improving public safety.</p> <p>Use Trimble MX software to organise, visualise, interpret, and efficiently extract structured data that can be integrated into a GIS and shared across your organisation or via the internet.</p>	<p>The Trimble MX50 mobile mapping system delivers accurate point clouds with immersive imagery for easy asset management, mapping and maintenance.</p> <p>The system delivers a very accurate point cloud of the environment along with complementary immersive imagery providing substantial gains in productivity. Whether for highway management, utilities, or local government, the Trimble MX50 puts you in control of your data capture project.</p> <p>The system does not require specific expertise and is simple to install and operate. Complementary point clouds and images provide you with all you need to extract asset location, size, condition, and other inspection and attribute information.</p> <p>The Trimble MX50's accurate point cloud underpins your ability to locate and measure your assets, whilst 360° imagery allows for the determination of inspection data and feature attribute information.</p>	<p>The Trimble MX90 is a complete field-to-finish mobile mapping solution that combines leading-edge hardware with intuitive field software and a powerful, integrated office software workflow.</p> <p>It combines long-range LiDAR, high resolution spherical and planar imagery along with best in class inertial sensors, providing the ultimate in mobile mapping performance. Capture rich, immersive data at highway speeds, eliminating the need for expensive road closures and the risk associated with employees working along busy highways.</p> <p>This high-performance mobile mapping system produces a detailed point cloud, with measurement ranges over 150 metres, 360° imagery up to 72 megapixels, in typical working conditions.</p> <p>The Trimble MX90 is ideal for undertaking data capture for large survey and engineering projects.</p>

OFFICE SOFTWARE

 <b>Trimble Business Center</b>	 <b>TMX Software</b>
<ul style="list-style-type: none"> <li>• From raw mobile mapping data to actionable information</li> <li>• Integrated trajectory processing engine</li> <li>• Pointcloud classification with customised deep learning models</li> <li>• Automated detection and classification of road pavement distresses</li> <li>• Data fusion of all geospatial sensors in a single software platform</li> </ul>	<ul style="list-style-type: none"> <li>• Simplify your mobile mapping data organisation</li> <li>• Automated assets extraction tools</li> <li>• Store extracted assets in the database of your choice</li> <li>• Review, query and analyse the assets for maintenance tasks</li> <li>• Share reality capture data via TMX Publisher</li> </ul>



**CAPTURE**  
Trimble Mobile Imaging Software



**PROCESS**  
Trimble Business Center Software



**EXTRACT**  
Trimble MX Asset Modeler



**SHARE**  
Trimble MX Publisher

	Trimble MX7	Trimble MX50	Trimble MX90
			
<b>Weight (sensor unit)</b>	11.3 kg	23 kg	37 kg
<b>IP rating (sensor unit)</b>	IP65	IP64	IP64
<b>Operating temperature</b>	0 °C to +35 °C	-10 °C to +50 °C	0 °C to +40 °C
<b>Field software</b>	TMI, browser-based, no installation necessary	TMI, browser-based, no installation necessary	TMI, browser-based, no installation necessary
<b>Office software</b>	Trimble Business Center Mobile Mapping Applanix POPSPac™ MMS Trimble MX	Trimble Business Center Mobile Mapping Applanix POPSPac MMS Trimble MX	Trimble Business Center Mobile Mapping Applanix POPSPac MMS Trimble MX
<b>Scan speed</b>	N/A	240 scans/sec	500 scans/sec
<b>Max range, target reflectivity &gt; 80%<sup>1</sup></b>	N/A	80 m	475 m
<b>Accuracy/precision<sup>2</sup></b>	N/A	2 mm/2.5 mm @ 30 m	5 mm/3 mm @30 m
<b>Field of view (FoV)</b>	N/A	Full 360°	Full 360°
<b>IMU options</b>	AP15	AP20/AP60	AP+60
Spherical Camera			
<b>Resolution</b>	30 MP (6 x 5 MP)	30 MP (6 x 5 MP)	72 MP (6 X 12 MP)
<b>Mounting</b>	Fixed	Fixed	Fixed
<b>FoV</b>	90% of full sphere	90% of full sphere	90% of full sphere
<b>Focal length</b>	4.4 mm	4.4 mm	4.4 mm
Side Planar Camera			
<b>Resolution</b>	N/A	N/A	12 MP x 2
<b>Mounting</b>	N/A	N/A	Adjustable (in horizontal and vertical positions)
<b>FoV</b>	N/A	N/A	H: 47.6° V: 35.9°
<b>Focal length</b>	N/A	N/A	16.0 mm
Back Planar Camera			
<b>Resolution</b>	N/A	N/A	12 MP
<b>Mounting</b>	N/A	N/A	Fixed
<b>FoV</b>	N/A	N/A	H: 82.9° V: 65.9°
<b>Focal length</b>	N/A	N/A	8.0 mm

1 Typical values for average conditions.

2 Accuracy: Accuracy is the degree of conformity of a measured quantity to its actual (true) value. Precision: Precision is the degree to which further measurements show the same results.

Contact your local Trimble Authorised Distribution Partner for more information

**NORTH AMERICA**  
Trimble Inc.  
10368 Westmoor Dr  
Westminster CO 80021  
USA

**EUROPE**  
Trimble Germany GmbH  
Am Prime Parc 11  
65479 Raunheim  
GERMANY

**ASIA-PACIFIC**  
Trimble Navigation  
Singapore PTE Limited  
3 HarbourFront Place  
#13-02 HarbourFront Tower Two  
Singapore 099254  
SINGAPORE